



About Middle Earth

Middle Earth is a non-profit, community-based agency that has been providing services to adolescents for almost four decades. Our mission is to provide prevention, intervention and crisis services assisting individuals, primarily youth, to develop into responsible and productive members of the community. Our programs, which are all free to our youth, guide kids in learning respect for themselves and others, serving the community as volunteers and choosing positive alternatives to gangs, drugs and crime.



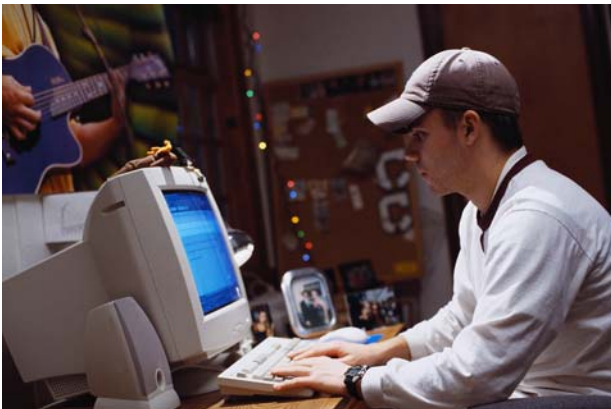
Somerset County
United Way
Affiliated Agency



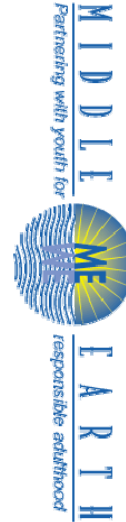
Program Location & Hours

The ERP is located at 520 North Bridge Street, Bridgewater at Middle Earth.

The hours of the program are Monday through Friday, 9:00 a.m. to 7:00 p.m. The program is very flexible and will make adjustments when needed, which may include weekend or later evening hours.



P.O. Box 8045
Bridgewater, New Jersey 08807



Employment Readiness Program

"If you want children to keep their feet on the ground, put some responsibility on their shoulders."
- Abigail Van Buren

P.O. Box 8045
Bridgewater, NJ 08807
(908) 725-7223
email: office@middleearthnj.org
www.middleearthnj.org



About the Program

The Employment Readiness Program (ERP) responds to the needs of youth between the ages of 14 and 21 who are facing an array of issues and need support to refine their employment readiness skills. Middle Earth helps these youth become more marketable in the workforce, which in turn allows them to become a productive member of the community. The program takes approximately 4 months to complete, with one year of follow-up. All youth attend the program for approximately 4 hours per week depending on their need. All services are tailored to the needs of the individual youth.



Program Goals

The goals of the program include:

- Provide youth with the necessary tools and resources to improve their academic success and employment skills in order to be marketable in the community.
- Provide support services to youth in a comprehensive manner to help them minimize the challenges that they may be facing.
- Build long-term relationships with youth in order to help them become responsible and productive members of the community.
- Assist youth in realizing their motivations and goals in life.



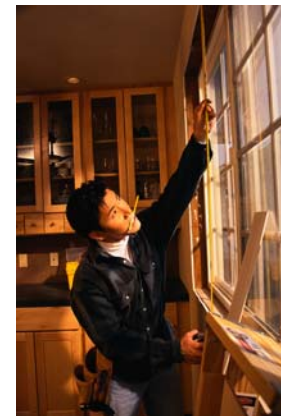
Services Offered

The services of the program include:

- Advocacy
- Career planning and development services
- Case management
- Completion of an Employment Readiness Workbook
- Counseling (alcohol, drug, individual, family), as appropriate
- County ID acquirement
- Creation of an individual plan to include the youth's goals related to education, employment, and other services identified
- Driver's permit preparation/written test
- Employment application information/completion
- Enrollment in adult night school/GED program
- Field trips to appropriate schools, colleges, occupational and/or vocational schools
- Group meetings (including weekly life skills groups and substance abuse education groups)
- Information and referral



- Job searches
- Leadership development
- Mentoring
- Occupational skill training (as appropriate)
- Outreach to the youth
- Post Secondary education and/or employment services
- Resume information/construction
- Summer employment opportunities
- Supervision
- TABE testing
- Transportation (as appropriate)
- Tutoring



Referral Sources

The referral sources for this program are:

- Somerset County Probation
- Tri-County Care Management Organization (CMO)
- Family Crisis Intervention Unit (FCIU)
- Richard Hall Community Mental Health Center (RHCMHC)
- Local police departments
- Board of Social Services
- Other agencies who feel that a youth could benefit from this program
- Walk-ins

